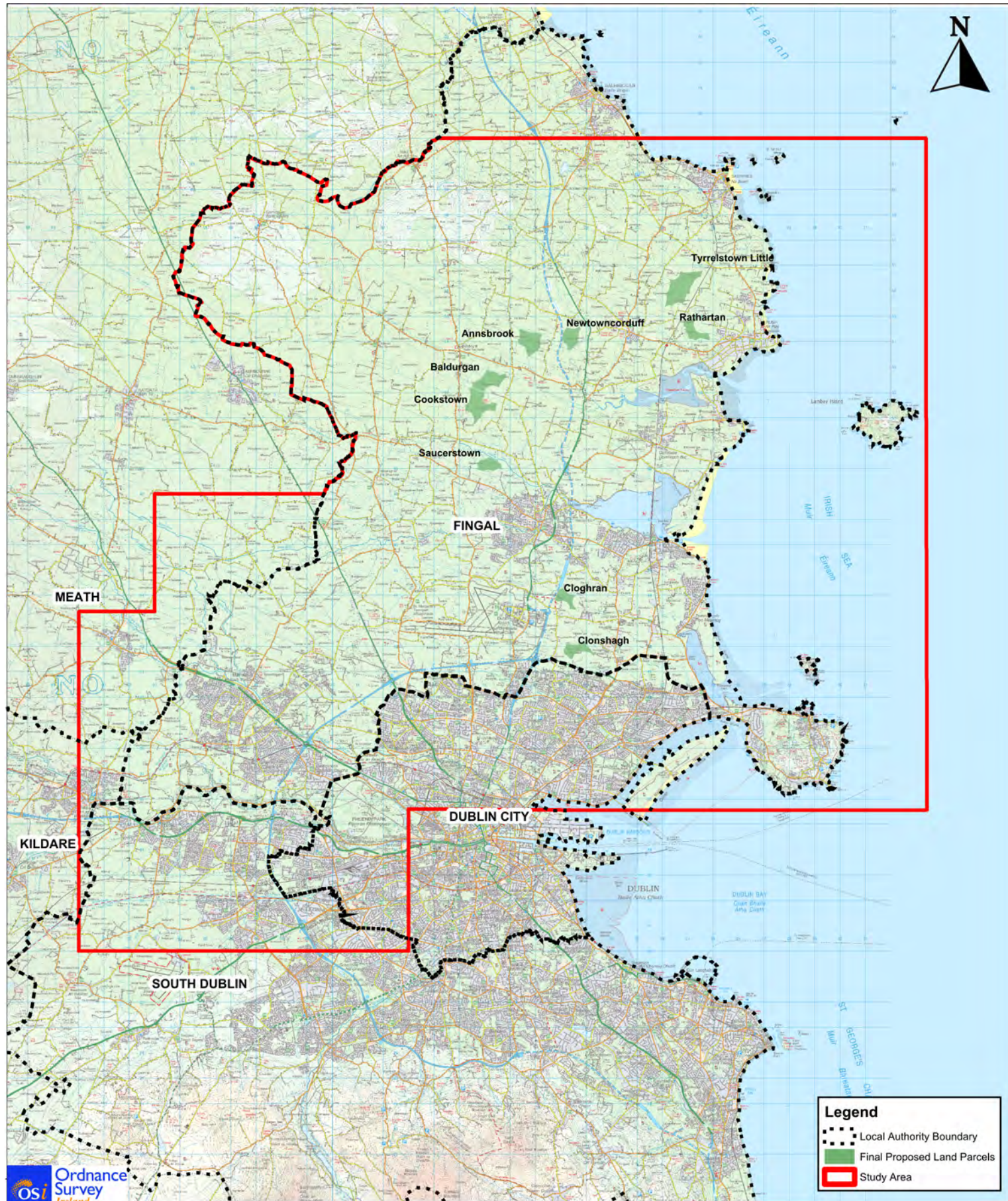


APPENDIX D

Posters



PUBLIC CONSULTATION ON ALTERNATIVE SITES ASSESMENT, PHASE ONE, PRELIMINARY SCREENING OUTCOMES REPORT

Fingal County Council has published a Report, identifying nine potential land parcels in the northern part of the Greater Dublin Area, for further investigation as possible locations for a new regional wastewater treatment works, associated marine outfall and orbital drainage system.

The Report and accompanying map is available to download from:
www.greaterdublindrainage.ie

Fingal County Council is undertaking six weeks of non-statutory consultation with all interested parties from 10th October to 18th November 2011 on the potential land parcels and the issues that should be considered in determining the ultimate locations for this vital new infrastructure.

You are welcome to attend any of four Open Days to be held in Fingal County Council, Main Street, Swords, where the Project Team will be available to discuss the Report and listen to your views.

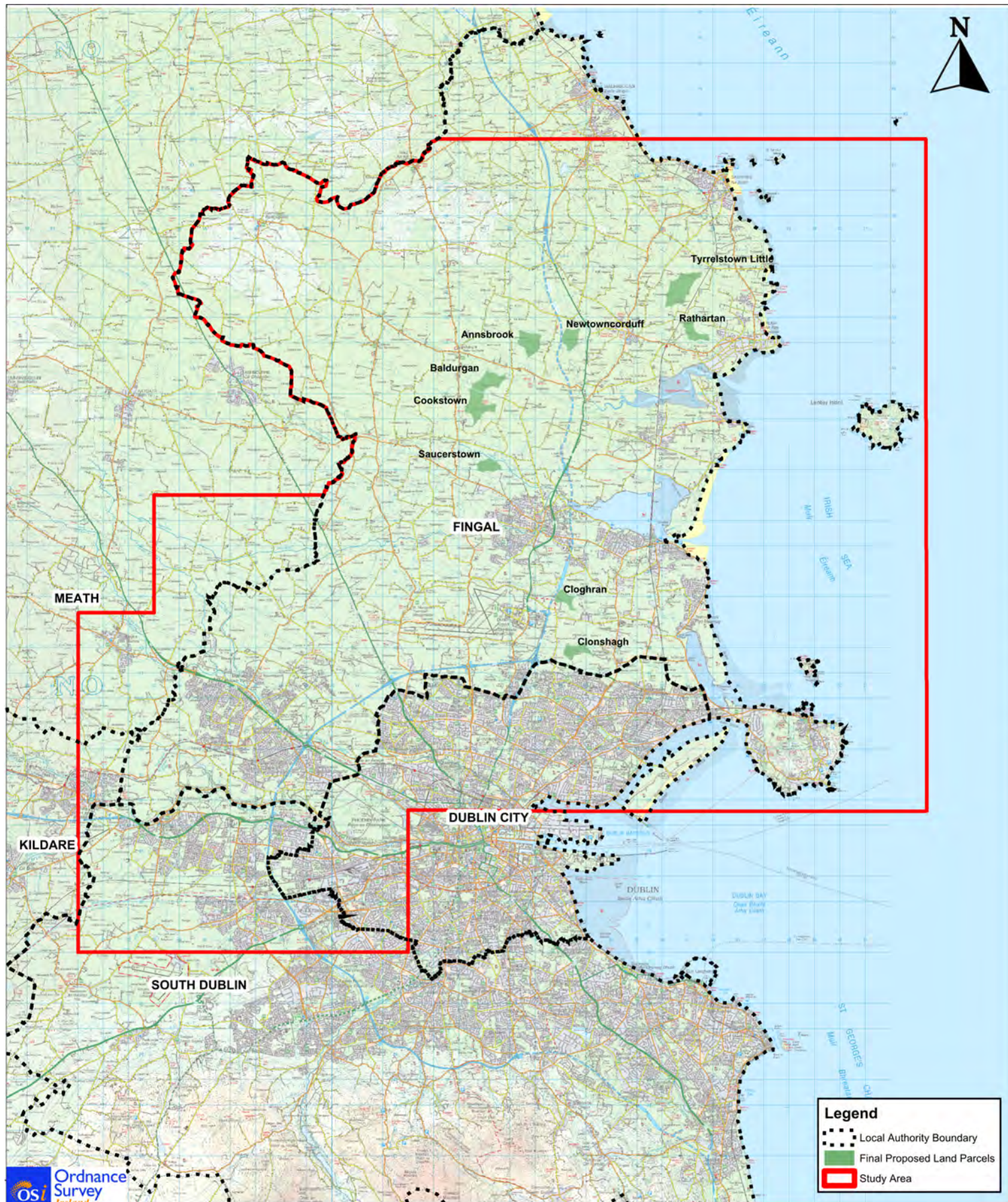
Open Days

Saturday 22nd October at 11am to 4pm
 Wednesday 26th October at 2pm to 8pm
 Thursday 3rd November at 2pm to 8pm
 Saturday 5th November at 11am to 4 pm

Written submissions on the potential land parcels may be sent, before 18th November 2011, to Greater Dublin Drainage Project Manager, C/O RPS Group, West Pier Business Campus, Dun Laoghaire, Co Dublin.

Further information:- [email info@greaterdublindrainage.ie](mailto:info@greaterdublindrainage.ie), Lo-call 1890 44 55 67 or visit www.greaterdublindrainage.ie

<p>Drawing Title ASA: PHASE ONE PRELIMINARY SCREENING OUTCOMES REPORT FINAL PROPOSED LAND PARCELS</p>		<p>© Ordnance Survey Ireland. All rights reserved. Licence number 2011/24/CCMA/Fingal County Council. © National Park and Wildlife Service, © Environmental Protection Agency.</p> <p>This drawing is not to be used in whole or in part other than for the intended purpose and project as defined on this drawing. Refer to the contract for full terms and conditions.</p>	<p>Drawing Status ISSUED Scale @ A3 1:140,000 DO NOT SCALE Job No. N/A Drawing No. FIGURE 1</p>
-------------------------------------------------------------------------------------------------------------------	--	------------------------------------------------------------------------------------------------------------------------------------------------------------------------------------------------------------------------------------------------------------------------------------------------------------------------------------------------------------------------------------------	-----------------------------------------------------------------------------------------------------------------------------------------



PUBLIC CONSULTATION ON ALTERNATIVE SITES ASSESSMENT, PHASE ONE, PRELIMINARY SCREENING OUTCOMES REPORT

Fingal County Council has published a Report, identifying nine potential land parcels in the northern part of the Greater Dublin Area, for further investigation as possible locations for a new regional wastewater treatment works, associated marine outfall and orbital drainage system.

The Report and accompanying map is available to download from:
www.greaterdublindrainage.ie

Fingal County Council is undertaking six weeks of non-statutory consultation with all interested parties from the 10th October. Fingal County Council have extended the date, by which people can make submissions on the potential land parcels for this vital new infrastructure, until **Friday the 2nd December.**

You are welcome to attend any of four Open Days to be held in Fingal County Council, Main Street, Swords, where the Project Team will be available to discuss the Report and listen to your views.

Open Days

Saturday 22nd October at 11am to 4pm
 Wednesday 26th October at 2pm to 8pm
 Thursday 3rd November at 2pm to 8pm
 Saturday 5th November at 11am to 4 pm

Written submissions on the potential land parcels may be sent, before Friday the 2nd December 2011, to Greater Dublin Drainage Project Manager, C/O RPS Group, West Pier Business Campus, Dun Laoghaire, Co Dublin.

Further information:- email info@greaterdublindrainage.ie, Lo-call 1890 44 55 67 or visit www.greaterdublindrainage.ie

<p>Greater Dublin Drainage</p>		<p>© Ordnance Survey Ireland. All rights reserved. Licence number 2011/24/CCMA/Fingal County Council. © National Park and Wildlife Service, © Environmental Protection Agency.</p>	
<p>Drawing Title</p> <p>ASA: PHASE ONE PRELIMINARY SCREENING OUTCOMES REPORT FINAL PROPOSED LAND PARCELS</p>		<p>This drawing is not to be used in whole or in part other than for the intended purpose and project as defined on this drawing. Refer to the contract for full terms and conditions.</p>	<p>Drawing Status: ISSUED Scale @ A3: 1:140,000 DO NOT SCALE Job No: N/A Drawing No: FIGURE 1</p>